



COLLEGE OF  
**PHARMACY**  
UNIVERSITY OF MICHIGAN



# PharmD

**Doctor of Pharmacy Degree**

**Best Value**

---

**Unmatched Opportunity**

---

**Proven Success**

---



[pharmacy.umich.edu](https://pharmacy.umich.edu)



## Why PharmD at Michigan?

**Y**ou'll find no better value, opportunity, or preparation for success as a PharmD candidate than at the University of Michigan College of Pharmacy. We're a small school within one of the world's most prestigious universities. In addition, we're affiliated with the University of Michigan Health System – a world-class health care and research organization. These factors combine to make our PharmD program an outstanding choice for your professional training.





## Best Value

---

- Competitive tuition: consistently lower than our peers in the top ten pharmacy schools
- Substantial scholarship support available

## Unmatched Opportunity

---

- World-class practice and teaching at the University of Michigan Health System
- Small class size (typically 85) with an enviable student/faculty ratio of 4:1
- Multi-year research projects
- Interprofessional classes with medical, dentistry, nursing, public health, kinesiology, and social work students
- Faculty who are nationally renowned clinical practitioners and researchers

## Proven Success

---

- Over 95% on-time graduation rate
- 99% five-year average NAPLEX Pass Rate
- Unparalleled success of graduates recruited and selected for the nation's leading residency and fellowship programs
- 94.8% of alumni report that the College contributed to their professional success



U. S. News & World Report, 2019

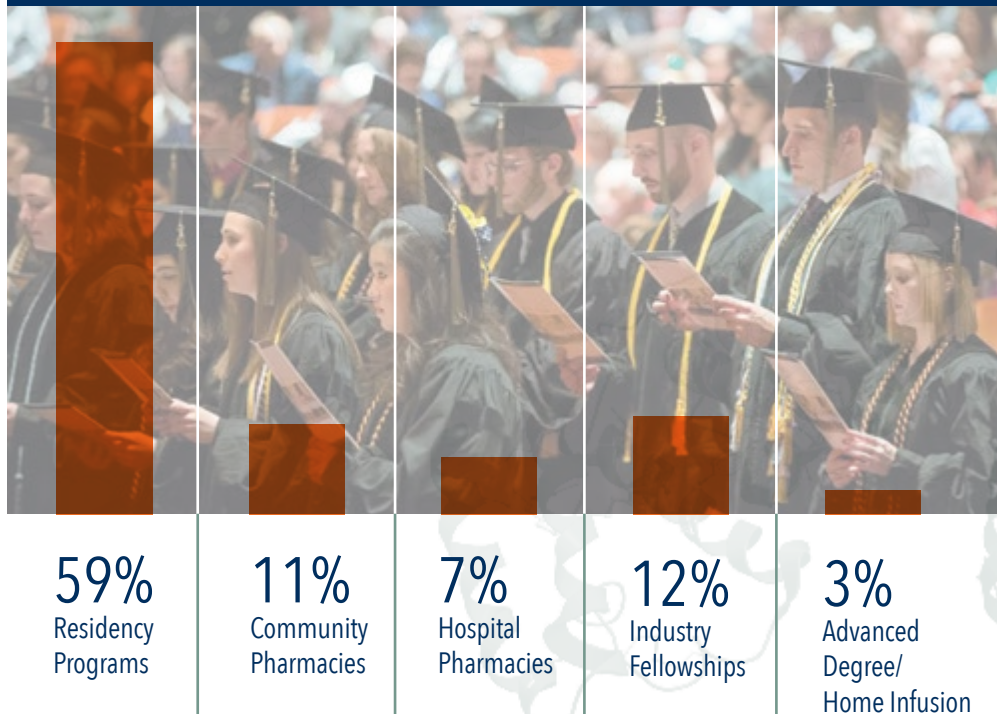
## Learn More

Please visit our web site **[pharmacy.umich.edu](https://pharmacy.umich.edu)** to learn more about our Doctor of Pharmacy degree. You'll find information on the skills you'll acquire, the curriculum, and how to apply.

## What is a PharmD?

The PharmD is a professional degree requiring four years of study after completion of a pre-pharmacy curriculum. Graduates will have the necessary skills to pursue licensure to practice pharmacy. However, not all choose to pursue this path – the program is broad enough to offer extensive opportunities that lead to careers in health systems, pharmaceutical companies, government and other public sector jobs, as well as careers in the academic world.

## Career Paths



Pharmacists  
placed

**2<sup>ND</sup>**

among the country's most  
trusted professionals

Gallup, 2016



## Small Enrollment – Big Experience

We choose to maintain our enrollment at 85 students per class to ensure that you have solid educational and experiential opportunities. We provide real-world learning with over 500 experienced, dedicated preceptors at more than 200 sites. The goal is to provide exposure to all facets of the field, increase awareness of health care issues, enhance critical thinking, and improve patient care skills.

Consistently Ranked In

**TOP  
10**  
Pharmacy  
Colleges

**90.1%**

of graduates would choose  
U-M Pharmacy again

**Ann Arbor**

is consistently ranked  
as one of the top  
places to live and work

**99%**

OF OUR STUDENTS  
PASS THE  
**NAPLEX EXAM**





COLLEGE OF  
**PHARMACY**  
UNIVERSITY OF MICHIGAN



### College of Pharmacy

The University of Michigan  
428 Church Street  
Ann Arbor, Michigan 48109-1065 (734)  
764-7312  
[pharmacy.umich.edu](mailto:pharmacy.umich.edu)  
[mich.pharm.admissions@umich.edu](mailto:mich.pharm.admissions@umich.edu)

### Regents of the University of Michigan

Jordan B. Acker, Huntington Woods Michael  
J. Behm, Grand Blanc  
Mark J. Bernstein, Ann Arbor  
Paul W. Brown, Ann Arbor  
Sarah Hubbard, Okemos  
Denise Ilitch, Bingham Farms  
Ron Weiser, Ann Arbor  
Katherine E. White, Ann Arbor  
Santa J. Ono (ex officio)

A Non-discriminatory, Affirmative Action  
Employer.

The University of Michigan, as an equal opportunity/affirmative action employer, complies with all applicable federal and state laws regarding nondiscrimination and affirmative action. The University of Michigan is committed to a policy of equal opportunity for all persons and does not discriminate on the basis of race, color, national origin, age, marital status, sex, sexual orientation, gender identity, gender expression, disability, religion, height, weight, or veteran status in employment, educational programs and activities, and admissions. Inquiries or complaints may be addressed to the Senior Director for Institutional Equity, and Title IX/Section 504/ADA Coordinator, Office for Institutional Equity, 2072 Administrative Services Building, Ann Arbor, Michigan 48109-1432, 734-763-0235, TTY 734-647-1388, [institutional.equity@umich.edu](mailto:institutional.equity@umich.edu).

For other University of Michigan information call 734-764-1817.

[pharmacy.umich.edu](http://pharmacy.umich.edu)